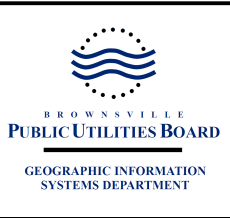
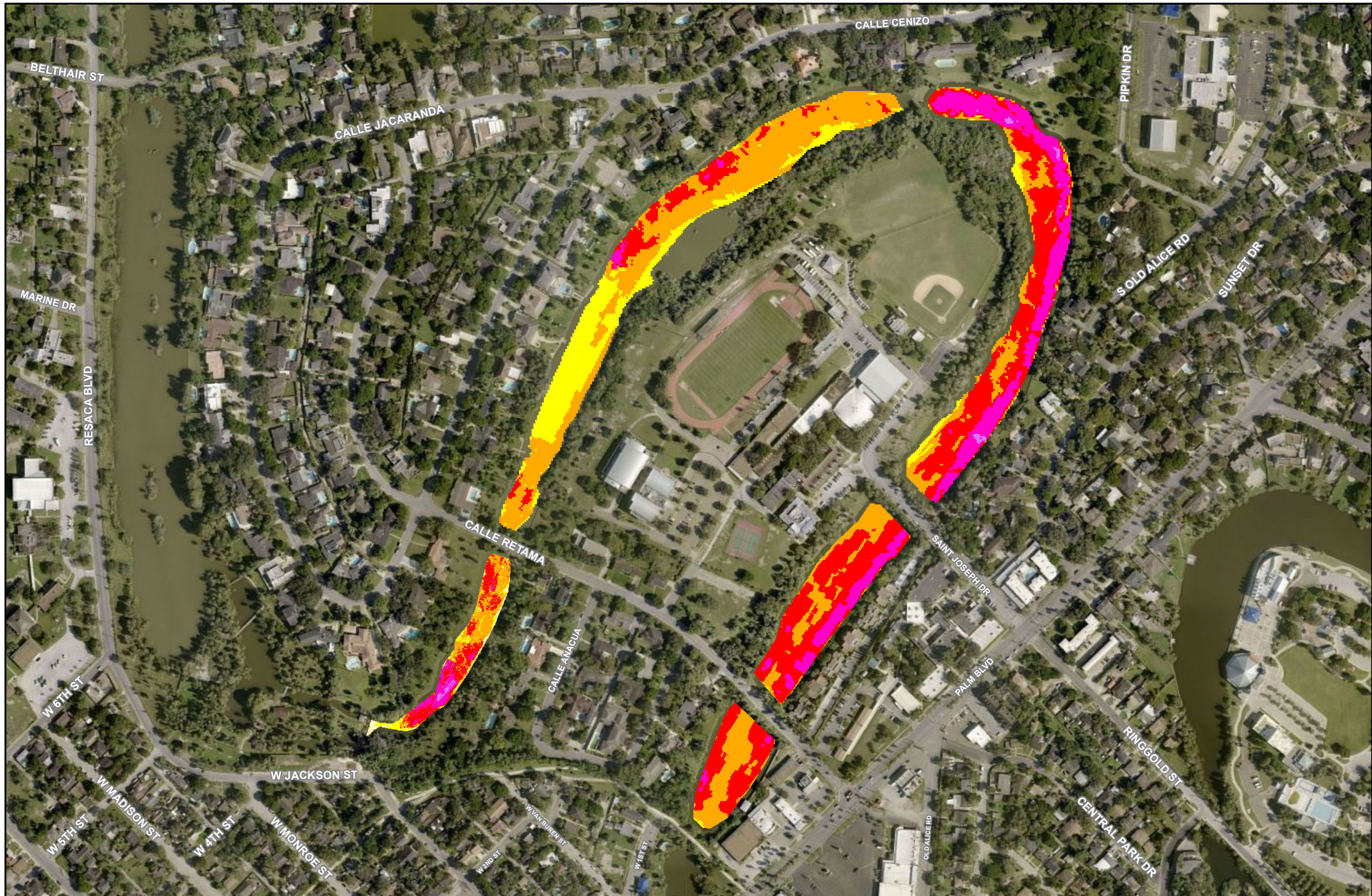


RESTORE Dredging

November 17, 2023



Legend

Dredge Progress

Depth

Light Yellow	1 - 2 FT
Yellow	2 - 3 FT
Orange	3 - 4 FT
Red	4 - 5 FT
Dark Red	5 - 6 FT
Magenta	6 - 7 FT
Purple	7 - 8 FT
Dark Purple	8 - 9 FT
Dark Blue	9 - 10 FT

Total Material Dredged:
57,136 Cu-Yd



DISCLAIMER - PUBLIC UTILITIES OF BROWNSVILLE

This map was created using data obtained from various sources, and created exclusively for the internal use of the Public Utilities Board of Brownsville. Portions of the information may be incorrect or not current. Any person or entity who relies on any information obtained from these maps does so at their own risk. Neither the Public Utilities Board of Brownsville, Texas, nor any agency, officer, or employee of the Public Utilities Board of Brownsville, Texas warrants the accuracy, reliability, or timeliness of such information.

THIS MAP IS PROVIDED "AS IS" WITHOUT WARRANTY OF ANY KIND, EITHER EXPRESSED OR IMPLIED, INCLUDING, BUT NOT LIMITED TO, THE IMPLIED WARRANTIES OF MERCHANTABILITY, FITNESS FOR A PARTICULAR PURPOSE, OR NON-INFRINGEMENT. THE PUBLIC UTILITIES BOARD OF BROWNSVILLE SHALL NOT BE LIABLE FOR ANY DIRECT, INDIRECT, SPECIAL, INCIDENTAL, OR CONSEQUENTIAL DAMAGES RELATED TO THE USE OF THIS MAP, EVEN IF THE PUBLIC UTILITIES BOARD OF BROWNSVILLE IS ADVISED OF SUCH DAMAGE.