



Date: May 2, 2022
To: All Vendors
Subject: Addendum #5

**REFERENCE: B031-22 36-INCH DIAMETER RAW WATERLINE REPLACEMENT
AT ROTARY PARK**

This Addendum forms part of the contract and clarifies, corrects or modifies original bid document.

Question 1: Verify that the existing waterline was installed in 1992.

Answer 1: Yes, it was a project designed by S.A. Garza Engineers, Inc. See attached as built.

The signature of the company agent, for the acknowledgement of this addendum, shall be required. Complete and return via email to dsolitaire@brownsville-pub.com

I hereby acknowledge receipt of this addendum.

Company: _____

Agent Name: _____

Agent Signature: _____

Address: _____

City: _____ **State:** _____ **Zip:** _____

If you have any further questions about the bid, please call (956) 983-6366.

BY: ***Diane Solitaire***
Purchasing

TYPICAL JOINT
PRESTRESSED CONCRETE CYLINDER PIPE
(A.W.W.A. C 301 AND C 303)

(1
—)

• SCALE: NOT TO SCALE

TYPICAL JOINT
WELDED TIED JOINT CONCRETE CYLINDER PIPE (2)
(A.W.W.A. C 301 AND C 303)
NOT TO SCALE

DETAIL 36" P.C.C.P. PIER CAP (4)
NOT TO SCALE

INSPECTION AND GROUT HOLE, SEE DETAIL "C"

7' MAXIMUM

CARRIER PIPE

12" TYP.

STEEL CASING

CASING INSULATOR

PLAN VIEW

NOT TO SCALE

INSPECT AND GROUT HOLE. TYP.
 CASING INSULATOR AS MFG BY PIPELINE SEAL AND INSULATOR INC., 6525 GOFORTH ST. HOUSTON TX. 77021 OR APPROVED EQUAL.
 BACKFILL GROUT
 STEEL CASING TYPICALLY 60" O.D. STEEL PIPE WITH 5/8" WALL THICKNESS UNLESS OTHERWISE CALLED FOR ON PLANS
 PROPOSED 36" DIA. PIPELINE (CARRIER PIPE)
 INSPECTION AND GROUT HOLE, TYP. SEE DETAIL "D"

15°
 45°/45°
 1 1/8"
 1/2" DIA.
 90° MITRE WELD
 5'-2 1/4"

TUNNEL SECTION
 NOT TO SCALE

B
 —

TOP OF PIPE

3'-2 3/8"

4"

3"

3"x1/8" GALV. METAL STRAP (A.S.T.M. A-36)

1 1/2"

GALV. PLATE 3"x3/8" (A.S.T.M. A-36) WITH 3/4" HEX NUT

1/2" DIA. x 3/4" BOLT WITH HEX NUT (2 REQ'D., EACH SIDE)

6" WIDE x 1/2" TH. PLATE PIPE CLAMP

1/4"

WELD

FURNISH AND INSTALL TWO PIPE GUARDS PER AERIAL CROSSING. LOCATE WITHIN 10 FEET OF BEGINNING AND END OF EACH AERIAL CROSSING. ENTIRE ASSEMBLY TO BE HOT DIP GALVANIZED AFTER FABRICATION.

3/4" DIA. GALV. MACHINE BOLT 12" LONG WITH FLAT WASHER EMBEDDED AS SHOWN ON TRANSVERSE SECTION

GALVANIZED PIPE GUARD DETAIL

NOT TO SCALE

5

DETAIL "A"

TYPICAL BELL DETAIL FOR JOINT HARNESS

TYPICAL SPIGOT DETAIL FOR JOINT HARNESS

ASSEMBLED JOINT DETAIL WITH JOINT HARNESS

P-303 AND L-301 JOINT HARNESS DETAIL

The technical drawings illustrate the construction of joint harnesses for P-303 and L-301 components. The top section shows two cross-sectional views: a typical bell detail and a typical spigot detail. Both details show a concrete base with a steel reinforcement bar (1/2" SQ. BAR) embedded in it. The bell detail shows a 1 1/2" wide opening and a 1" thick wall. The spigot detail shows a 3 1/4" wide opening and a 1" thick wall. The bottom section shows an assembled joint detail with a joint harness. The harness consists of a circular plate with four 7/8" diameter holes, secured by four 3/4" x 4" bolts with nuts. The plate is 1 1/2" thick and has a 9/16" wide flange. The assembly is shown being installed into a concrete joint, with dimensions indicating a 2" hole for joint mortar and a 3/8" gap between the plate and the concrete.

NOTES:

1. INSPECTION AND GROUT HOLES FOR CONTACT GROUTING OF THE STEEL CASING TO HAVE A LONGITUDINAL SPACING NO GREATER THAN 10 FEET AND ALTERNATE 15 DEGREES LEFT AND RIGHT OF CASING CENTERLINE.
2. CARRIER PIPE SHALL BE GROUTED INTO THE STEEL CASING USING THE INSPECTION AND GROUT HOLES AS SHOWN OR AN APPROVED METHOD. THE INSPECTION AND GROUT HOLES SHALL HAVE A LONGITUDINAL SPACING NO GREATER THAN 10 FEET AND THE BOTTOM TWO SHALL ALTERNATE 45 DEGREES LEFT AND RIGHT OF THE CASING CENTERLINE AS SHOWN.

24'-0" (C 301) 32'-0" (C 303)

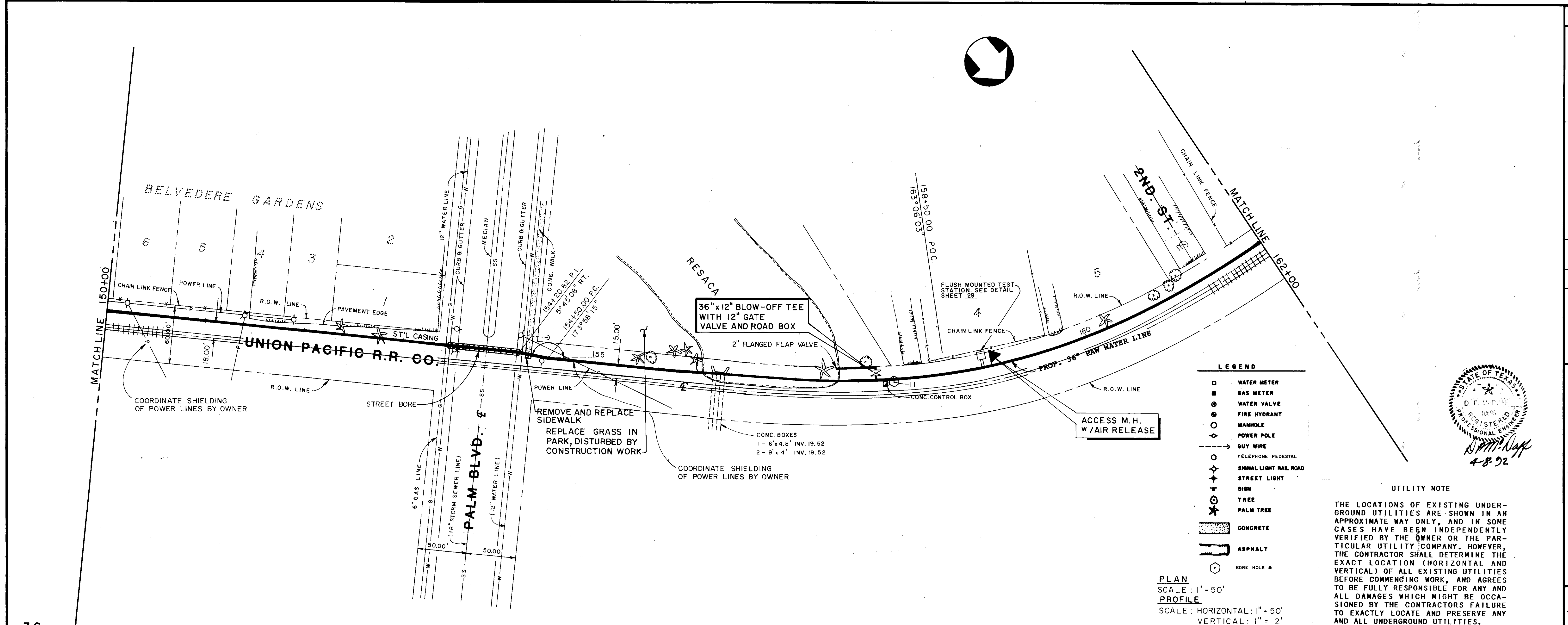
2'-0" 2'-0" 2'-0" 2'-0"

1" EXTRA MECHANICALLY IMPACTED MORTAR COATING TO PROVIDE SATISFACTORY BEARING FOR THE PIPE

ALTERNATE METHOD OF
SEPARATING CARRIER PIPE FROM
CASING AND DISTRIBUTING LOAD
(FOR A.W.W.A. C 301 AND C 303 PIPE)

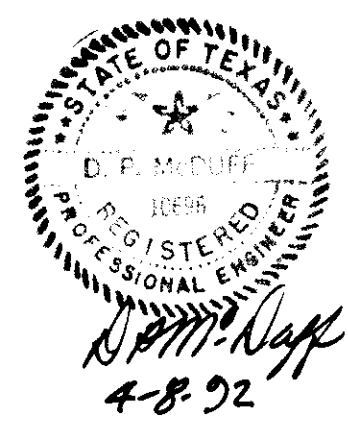
NOT TO SCALE

[illegible]



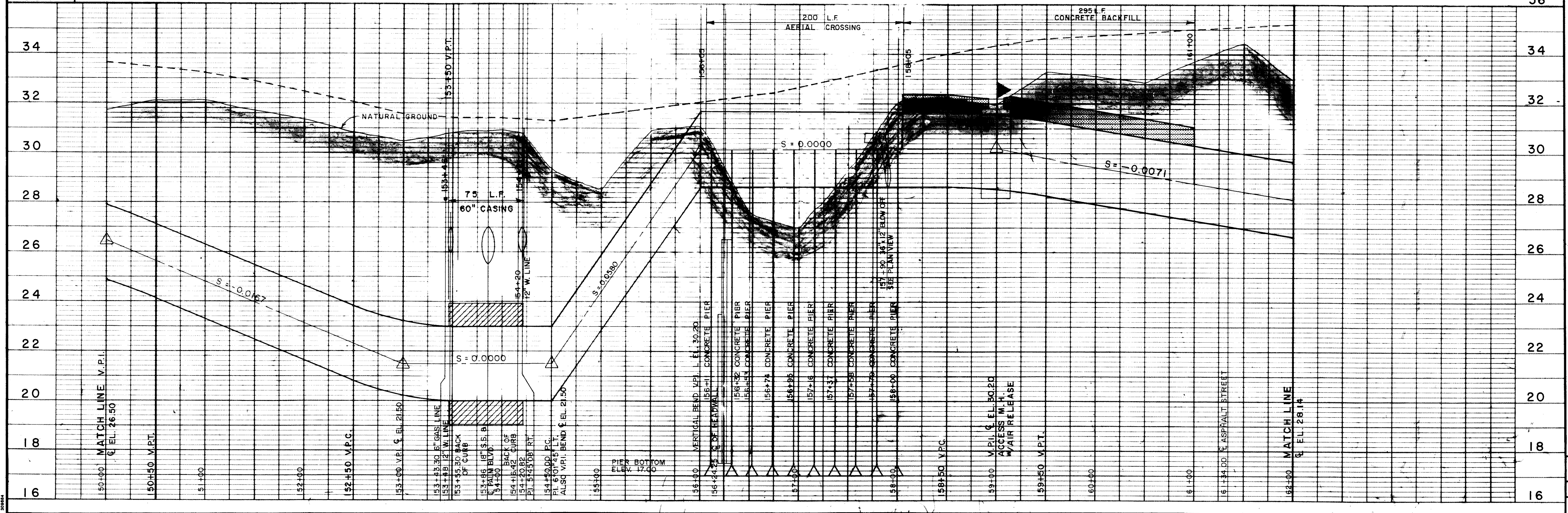
- LEGEND**
- WATER METER
 - GAS METER
 - WATER VALVE
 - FIRE HYDRANT
 - MANHOLE
 - POWER POLE
 - GUY WIRE
 - TELEPHONE PEDESTAL
 - SIGNAL LIGHT RAIL ROAD
 - STREET LIGHT
 - SIGN
 - TREE
 - PALM TREE
 - CONCRETE
 - ASPHALT
 - BORE HOLE

PLAN
SCALE: 1" = 50'
PROFILE
SCALE: HORIZONTAL: 1" = 50'
VERTICAL: 1" = 2'



UTILITY NOTE

THE LOCATIONS OF EXISTING UNDERGROUND UTILITIES ARE SHOWN IN AN APPROXIMATE WAY ONLY, AND IN SOME CASES HAVE BEEN INDEPENDENTLY VERIFIED BY THE OWNER OR THE PARTICULAR UTILITY COMPANY. HOWEVER, THE CONTRACTOR SHALL DETERMINE THE EXACT LOCATION (HORIZONTAL AND VERTICAL) OF ALL EXISTING UTILITIES BEFORE COMMENCING WORK, AND AGREES TO BE FULLY RESPONSIBLE FOR ANY AND ALL DAMAGES WHICH MIGHT BE OCCASIONED BY THE CONTRACTOR'S FAILURE TO EXACTLY LOCATE AND PRESERVE ANY AND ALL UNDERGROUND UTILITIES.



FIELD BOOK NO.	
APPROVED/DATE	REVISIONS
NO.	DATE
8/91	
DESIGNED D.P.M.	
DRAWN: R.H.G.	
CHECKED D.A.D.	
SCALE	AS NOTED

PLAN & PROFILE
STA. 150+00 TO STA. 162+00
BROWNSVILLE RAW WATER TRANSMISSION FACILITIES
BROWNSVILLE, TEXAS

S.A. GARZA ENGINEERS INC.
4200 WEST UNIVERSITY DR. AUSTIN-CORPUS CHRISTI-EDINBURG
EDINBURG, TEXAS 78539
LAREDO-SAN ANTONIO

16 SHEET OF **82**
JOB NO. E90010
FILE NO. E-187